

# DEEPWATER ATLAS

## ULTRA-DEEPWATER DUAL-ACTIVITY DRILLSHIP



### For additional information please contact:

Transocean  
Marketing Department  
1414 Enclave Parkway  
Houston, TX 77077, USA  
Phone: + 1-713-232-7500  
Fax: + 1-713-232-7880  
[marketing@deepwater.com](mailto:marketing@deepwater.com)  
[www.deepwater.com](http://www.deepwater.com)

### General Description

<b>Design / Generation</b>	Jurong Espadon JE3T Ultra Deepwater Drillship
<b>Constructing Shipyard</b>	Jurong Shipyard, Pte Ltd, Singapore
<b>Year Entered Service / Significant Upgrades</b>	2022
<b>Classification</b>	DNV +1A1, Ship Shaped Drilling Unit, E0, DYNPOS AUTRO, DRILL, CRANE, HELDK, BIS, MPD
<b>Flag</b>	Marshall Islands
<b>Dimensions</b>	816.6 ft. (249 m) x 139.4 ft. (42.5 m) x 64 ft. (19.5 m) depth
<b>Drafts</b>	Maximum Operating 38.05 ft. (11.6 m) / Transit 26.3 ft. (8 m)
<b>Accommodation</b>	220 persons
<b>Displacement</b>	90,131 st. (81,766 mt) Operating
<b>Variable Deck</b>	24,250 st. (22,000 mt) operating / 17,637 st. (16,000 mt) transit
<b>Transit Speed</b>	12 knots
<b>Maximum Water Depth</b>	12,000 ft. (3,658 m) designed / 10,000 ft. (3,048 m) outfitted
<b>Maximum Drilling Depth</b>	40,000 ft. (12,192 m)

### Drilling Equipment

<b>Derrick</b>	Dual Dynamic Bottle Neck Type (DDBN-1750/1250). 168.86 ft. (51.5 m) clear lifting height x 80ft (24.4m) x 60 ft. (18.3 m). Designed to API-4F, SSL E2/U2
<b>Gross Hook Loads</b>	(Main) 1,700 st. (1,542 mt) capacity (Aux) 1,250 st. (1,134 mt) capacity
<b>Drawworks</b>	(Main) NOV AHD-1700-10500 hp (Aux) NOV AHD-1250-9000hp
<b>Compensator</b>	(Main) NOV CMC-E-1500/3300-7x78, rated 1650 st. (1,497 mt) locked, 750 st. (680 mt) compensating, 25 ft (7.62 m) stroke
<b>Rotary Table</b>	(Main & Aux) NOV RST-755 75-1/2" hydraulic rated at 1,500 st. (1,360 mt) (main), 1,250 st. (1,134 mt) (aux); both 45,000 ft.-lbs. maximum continuous torque
<b>Top Drive</b>	NOV TDX-1500 1,500 st. (1,360 mt) (main), NOV TDX-1250 1,250 st. (1,134 mt) (aux) Maximum Speed 275 rpm, continuous torque 105,000 ft.-lbs at 130rpm
<b>Tubular Handling</b>	Two (2) NOV ARN-270-(TW-3/60) Iron Roughnecks for tubulars ranging from 3-1/2" to 10". Racking systems for tubular range of 3-1/2" to 22" with two (2) vertical NOV/HR-IV-ER Hydraracker pipe racking systems One (1) NOV Pipe Catwalk Shuttle, CWS-P20-90HS-90-HS. Maximum capacity 22 st. (20 mt), 93 ft. (28.3 m) tubular at 36" Diameter
<b>Riser Feed</b>	One (1) NOV Riser Catwalk Machine, CWM-R45-90-HS Maximum capacity 49 st. (45 mt). (2) Riser Cranes and a Riser Lift.
<b>Mud Pumps</b>	Five (5) NOV 14-P-220 AC triplex pumps, 7,500 psi, each driven by two (2) x GE 1,150hp 690VAC motors plus space for a fifth optional pump
<b>HP Mud System</b>	Rated 7,500 psi
<b>Solids Control</b>	Six (6) Brandt Single VSM-MS triple deck shale shakers

### Cranes

<b>Cranes</b>	Three (3) 110 st. (100 mt) knuckle boom cranes at 62 ft (19 m) radius, rated at 27 st. (25 mt) at a radius of 147. (45 m)
<b>Subsea Crane</b>	One (1) 181st (165mt) active heave compensated knuckle boom crane for handling subsea equipment to 9,842 ft. (3,000 m) WD
<b>Stern Crane</b>	One (1) 44 st. (40 mt) crane for thruster motor removal and flare boom handling

Revision Date: 1 September 2023

### Power & Machinery

<b>Main Power</b>	6ea Wartsila 16V32E 4-stroke, 720 rpm, 7680 kW each total 46,080 kW, each driving a 7200 kW, 11kV generator each, total 43,200 kW
<b>Emergency Power</b>	One (1) 4-stroke, 1,800rpm Cummins CSMXTA60OLGS diesel engine rated at 1,900 kW driving a 690 VAC 1,700kW, 2125kVA generator. One (1) Schneider emergency power switchboard
<b>Power Distribution</b>	Three (3) Siemens 11KV AC switchboards with (AGP)® (Advanced Generator Protection). Three (3) Siemens 690VAC Drilling VFD Switchboards. Six (6) Schneider 690VAC Low Voltage Switchboards (3 Forward, 3 Aft)

### Storage Capacities

<b>Fuel Oil</b>	53,069 bbl. (8,437 m3)
<b>Liquid Mud</b>	(active + reserve + slug) 20,548 bbl. (3,267 m3)
<b>Base Oil</b>	6,289 bbl. (1,000 m3)
<b>Brine</b>	11,132 bbl. (1,770 m3)
<b>Drill Water</b>	23,989 bbl. (3,814 m3)
<b>Potable Water</b>	12,975 bbl. (2,062 m3)
<b>Bulk Material</b>	(mud + cement) 38,140 cu. ft. (1,080 m3)
<b>Sack Storage</b>	10,000 sacks

### BOP & Subsea Equipment

<b>BOP</b>	One (1) x six (6) ram 18-3/4" x 20,000 psi NOV BOP and one (1) x seven (7) ram 18-3/4" x 15,000 psi NOV BOP. Separate test control system for the second BOP while the primary BOP is deployed.
<b>LMRP</b>	Two (2) LMRP's, 15k including one (1) NOV/Schaffer 18-3/4" 10,000 psi Schaffer dual spherical preventer and 20k including one (1) GE annular.
<b>BOP Handling</b>	NOV BOP Moonpool Trolley rated at 716 st. (650mt). BOP Gantry Crane with two (2) x 330st (300mt) main hoist and two (2) 38 st. (35 mt) auxiliary hoists
<b>Marine Riser</b>	NOV FT-HC 21" OD Flanged. With 4 1/2" ID K/C lines, 4" ID booster line and 2ea conduit lines
<b>Tensioners</b>	4,000 kips combined capacity using eight (8) NOV WRT-250-D50PL dual riser tensioners rated at 250 kips each, 50 ft. (15.24 m) Stroke
<b>Diverter</b>	NOV/Shaffer / 21-500-75-EXT, 21" x 500 psi with one (1) 16" Overboard Valve feeding a 16" Flow selector with two (2) 16" overboard line.
<b>Tree Handling</b>	One (1) 1,102 st. (1,000mt) Combined Xmas Tree Trolley and Riser Trip Handling Cart. Two (2) 165 st. (150mt) skid cart with 4-way skidding
<b>BOP Controls</b>	NOV Multiplex control system, with deadman system, auto-shear, acoustic back-up system and ROV intervention.
<b>Moonpool</b>	91.86 ft. (28 m) length x 35.43 ft. (10.8 m) width

### Station Keeping / Propulsion System

<b>Thrusters</b>	Six (6) Rolls Royce UUC 455 FP variable speed, demountable azimuthing thrusters, 5,500 kw. Each, with advanced thruster capabilities (ADCAP)
<b>DP System</b>	DPS-3 rated for water depth up to 12,000 ft. (3,658 m) with backup DP system. Kongsberg DP-32, DP-12 & C-Joy System

### Other Information

Additional Features MPD Ready - Upgraded

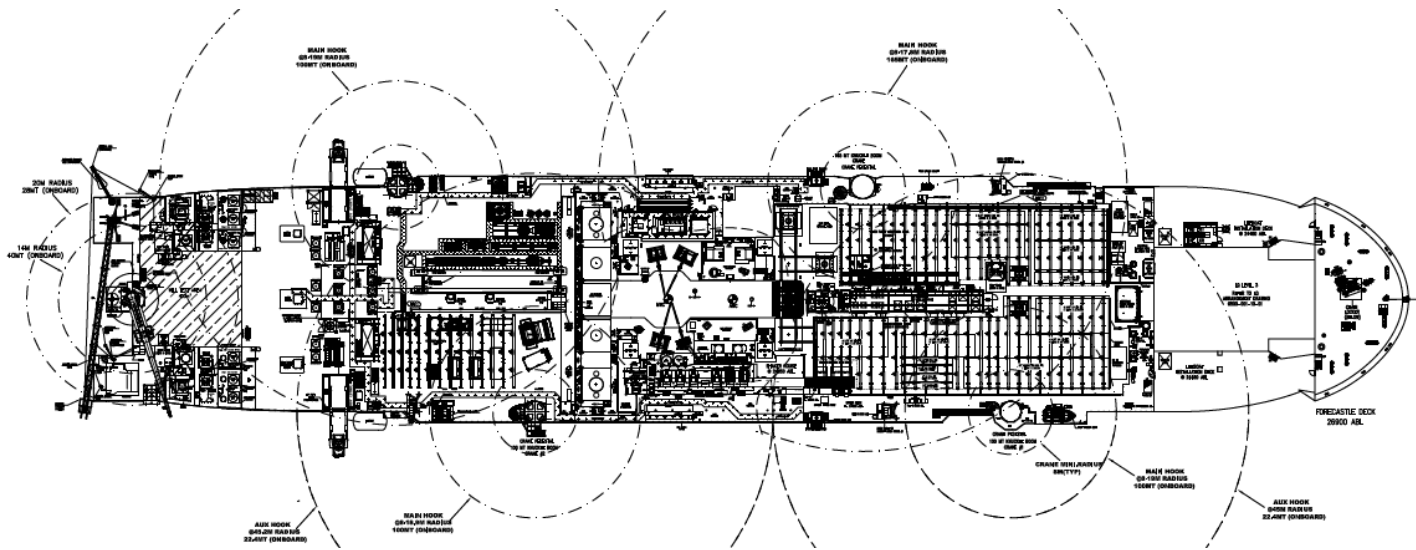
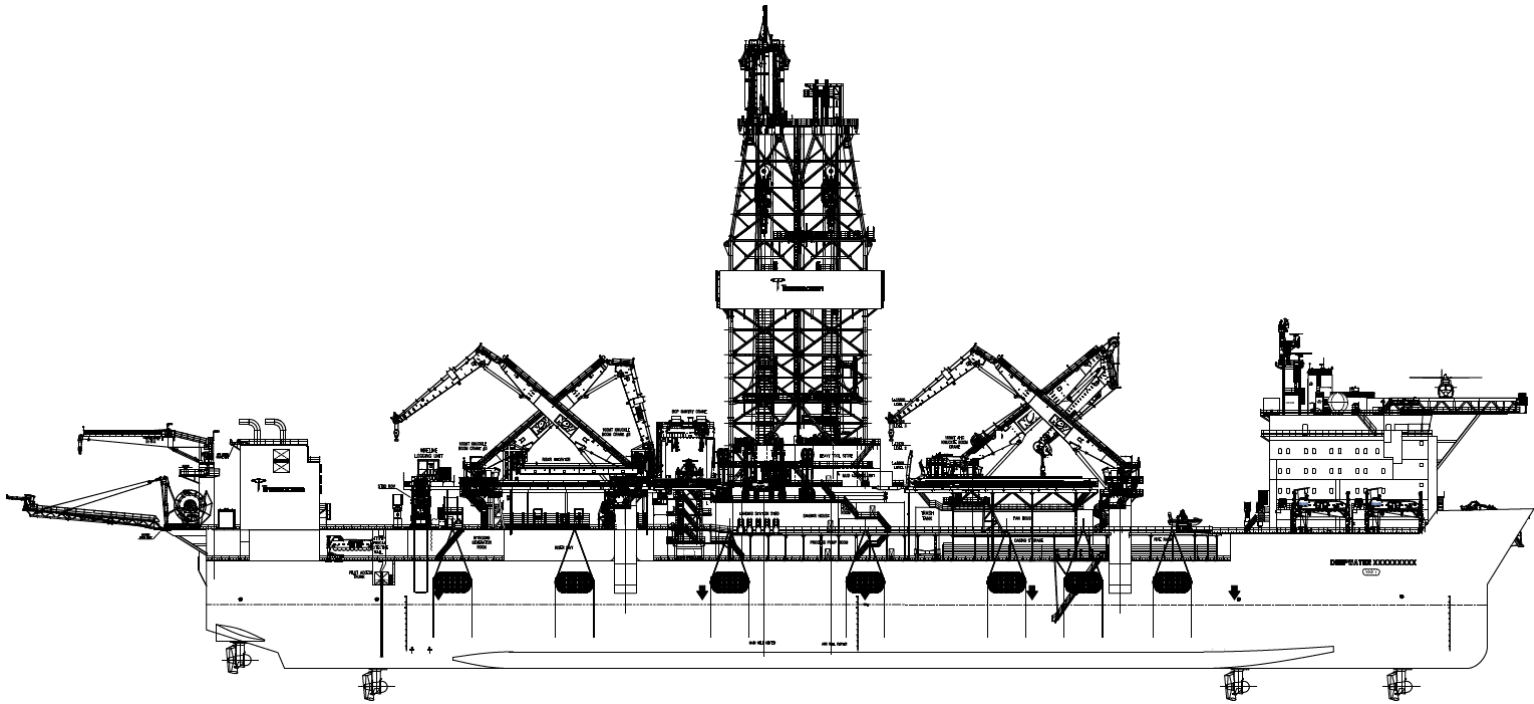
These specifications are intended for general reference purposes only, as actual equipment and specifications may vary based upon subsequent changes, the contract situation and customer needs. All equipment shall be operated and maintained at all times, in compliance with Transocean standard operating manuals, policies and procedures, and within its stated operational limits or continuous rated capacity, in order to assure maximum operational efficiency.

Patent Notice: This rig, its systems, components, and/or equipment in use on this rig, may be protected by one or more US and/or foreign patents. See <http://www.deepwater.com/patents> for details.



# DEEPWATER ATLAS

ULTRA-DEEPWATER DUAL-ACTIVITY DRILLSHIP



# BOUNDLESS

# SERVICE FOCUSED DATA DRIVEN PERFORMANCE ORIENTED

Revision Date 1 September 2023



These specifications are intended for general reference purposes only, as actual equipment and specifications may vary based upon subsequent changes, the contract situation and customer needs. All equipment shall be operated and maintained at all times, in compliance with Transocean standard operating manuals, policies and procedures, and within its stated operational limits or continuous rated capacity, in order to assure maximum operational efficiency.

Patent Notice: This rig, its systems, components, and/or equipment in use on this rig, may be protected by one or more US and/or foreign patents. See <http://www.deepwater.com/patents> for details.